

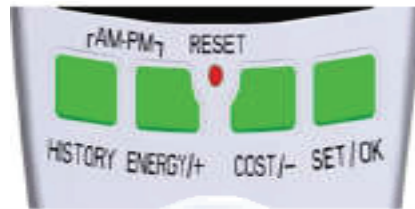
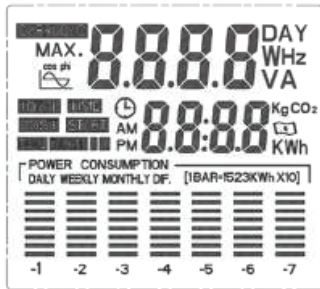
OUT OF THE BOX



Before the power meter is used for the first time ensure that batteries have been inserted. Remove the battery tab or remove the cover using a small screwdriver and insert the two batteries ensuring correct polarity. Replace the cover.

DISPLAY

The display is split into 3 rows:



BUTTONS

- **ENERGY/+**: Pressing the Energy button will cause the display row to cycle through instantaneous values of **Voltage** » **Current in Amps** » **Power in Watt** » **frequency** » **Power Factor**. While modifying settings, this button will decrease the value
- **HISTORY**: Pressing the History button will cause the display row to cycle through values of **Consumption** » **KWH (unit of electricity) Daily, Weekly & Monthly**.
- **COST/-**: Pressing the Cost button repeatedly will show **Power** in Watts at the top line of the display. At the second line, it shows: **Total Cost** » **Tariff or Electrical rate** » **Multi Tarriff information (advanced feature)** » **Carbon dioxide information** » **Time Elapsed** » **Total KWH used**. While modifying settings, this button will decrease the value
- **RESET**: The unit can be reset using a pointed implement to press the reset button. This will clear all accumulated data and return the unit to its factory settings.
- **SET/OK**: This button can be used to begin a setup option and confirm setup when completed.

SET-UP

• Setting the currency and price for kWh:

Press and hold the **COST/+** until the Tariff screen is displayed and then press and hold the **SET/OK** button for 3 seconds. When "TARIFF 1" flashes, press **ENERGY/+** or **COST/-** to select either "Tariff 1" or "Dual Tariff" then press **HISTORY** to confirm selection.

SINGLE TARIFF: Use the **HISTORY** button to move to the digit position and **ENERGY/+** or **COST/-** to change the number. Press **SET/OK** button to confirm.

DUAL TARIFF: You will first be shown a flashing "TARIFF 1". Use the **HISTORY** button to move to the digit position and **ENERGY/+** or **COST/-** to change the number. Press **SET/OK** button to confirm. You will be asked the time to start this tariff. Use the **HISTORY** button to move to the digit position and **ENERGY/+** or **COST/-** to change the number.

You will then be shown a flashing "DUAL TARIFF". Use the **HISTORY** button to move to the digit position and **ENERGY/+** or **COST/-** to change the number. Press **SET/OK** button to confirm. You will be asked the time to start this tariff. Use the **HISTORY** button to move to the digit position and **ENERGY/+** or **COST/-** to change the number.

• Setting the Clock:

Press the **COST** button to see the Time screen. Press and hold the **SET/OK** button for 3 seconds. The time symbol ⌚ will flash. Use the **HISTORY** button to cycle through digits. Use the **ENERGY/+** or **COST/-** button to change the value of the digits. Press the **SET/OK** button to finish the setting procedure. If no buttons are pressed for 10 seconds before the **SET/OK** button is pressed, setup will end and the old setting will be reverted to.

• Setting the Overload Power (Optional) :

Press the **ENERGY/+** button to select the "OVERLOAD" screen. Press and hold the **ENERGY/+** button for 3 seconds until the first digit begins to flash. Use the **HISTORY** button to cycle through digits. Use the **ENERGY/+** or **COST/-** button to change the value of the digits. Press the **SET/OK** button to finish the setting procedure. If no buttons are pressed for 10 seconds before the **SET/OK** button is pressed, setup will end and the old setting will be reverted to. The default factory setting is 3120W.

• Setting the KgCO2 (Optional):

Press the **ENERGY/+** button to select the KgCO/Kwh option. Press and hold the **SET/OK** button for 3 seconds. The **HISTORY** button to cycle through digits. Use the **ENERGY/+** or **COST/-** button to change the value of the digits. Press the **SET/OK** button to finish the setting procedure. If no buttons are pressed for 10 seconds before the **SET/OK** button is pressed, setup will end and the old setting will be reverted to. The default factory setting is 0.00W.

Clearing totals

To reset the totals: Press **ENERGY/+** or **COST/-** together, the display will begin to flash. Press and hold the **SET/OK** button for 3 seconds. When the display stops flashing all accumulated data will have been cleared.

Factory Reset: Press and hold the **RESET** button. All data and settings will be cleared

Replacing the Batteries

Remove the battery cover by unscrewing the two securing screws. Remove the dead batteries and replace with the specified batteries, 2 x 1.5V AG13/LR44, ensuring correct polarity during insertion.

Specifications

Rating: 230V~ 50 Hz
Load max: 13 Amps, 3120 Watts

Time Display

Accumulated ON time 0 seconds to 9999 days
The unit also displays the current time of day

Energy Display

Measured voltage range: 230V AC $\pm 1.5\%$
Measured current range: 0.005-13 Amps $\pm 2\%$
Measured power: 0 to 3120 Watts $\pm 2\%$
Power factor: 0.00 to 1.00
Measured frequency range: 45-65Hz
Overload threshold: Max. 3120 Watts

Cost Display

Accumulated electricity usage: 0.000-9999 kilowatt-hour (kWh)
Accumulated carbon footprint: 0.000 to 9999 KgCO₂
Selectable price/kWh: 00.00 to 9999
Accumulated cost/kWh: 0.000 to 9999
Selectable currency: in £ / \$ / €

Operating environment: 0°C to +50°C
Storage environment: -10°C to +50°C
Weight: 200g

Regulatory Information

WEEE

This product is classed as Electrical or Electronic equipment and comes under the WEEE waste disposal and recycling requirements of Directives 2002/96/EC and 2003/108/EC within the EU. Please ensure that you dispose of this product responsibly using your local authority's recycling facilities or via your supplier for commercial customers.

User Guide for Appliance Power Meter



Model: ENER007

Energenie is a trading name of Sandal plc, Claremont House,
Deans Court, Bicester, UK, OX26 6BW

If you have questions, please visit us at www.energenie4u.co.uk