

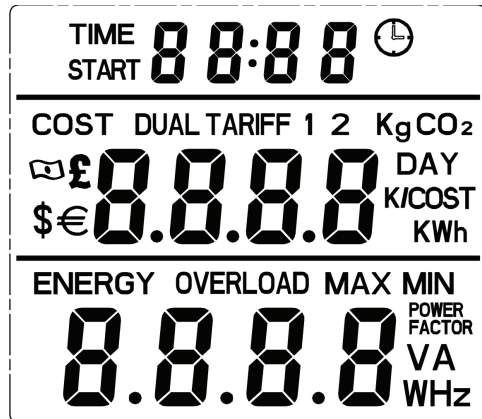
## OUT OF THE BOX



Before the charger is used for the first time ensure that batteries have been inserted. Remove the battery tab or remove the cover using a small screwdriver and insert the two batteries ensuring correct polarity. Replace the cover.

## DISPLAY

The display is split into 3 rows:



Row 1: Display either the time of day OR the accumulated time for which energy use has been recorded.

Row 2. Cycle through the display to show accumulated energy and cost information.

Row 3. Energy screen to show instantaneous metered readings. (Cycle through with the energy button.)

## BUTTONS

- **CLOCK:** Pressing the clock button in normal use will cause the display row to toggle between the time of day and the accumulated time for which energy has been recorded.
- **COST:** Pressing the cost button will cause the display row to cycle through values of **accumulated energy** » **accumulated carbon footprint** » **energy price setting 1** » **energy price setting 2 (only appear if you have chosen dual tariff)** » **accumulated cost**
- **ENERGY:** Pressing the energy button will cause the display row to cycle through instantaneous values of **overload power** » **power** » **voltage** » **frequency** » **current** » **power factor** » **max power** » **min power**
- **UP:** This button is used to change the values of the digits during the setting-up process.
- **RESET:** The unit can be reset using a pointed implement to press the reset button. This will clear all accumulated data and return the unit to its factory settings.

- **SET:** This button can be used to move between digits during the setting-up process. It will also allow the user to cycle through both the energy and cost screens simultaneously in normal use.

- **OK: (Use during setup)** This button is used to confirm settings during the setting-up process.

## SET-UP

### • Setting the currency and price for kWh:

Press and hold the **cost** button for 3 seconds. The currency screen will appear on the display. Use the **up** button to select the currency symbol. Press the **ok** button to move to the tariff setting procedure. Use the **up** button to select single or dual tariff. The default tariff setting is single. Press the **ok** button to move to the tariff price setting procedure. The default cost kWh factory setting is 1.00. Use the **up** button to cycle through digits and use the **set** button to move between digits.\* Exit by pressing the **cost** button. \*(For dual tariff: Press the **ok** button to select Start Time. Use the **up** button to cycle through digits and use the **set** button to move between digits. Press the **ok** button to move to tariff-2 setting. Repeat the price setting procedure for tariff-2. Exit by pressing the **cost** button.)

### • Setting the Clock:

Press and hold the **clock** button for 3 seconds. The time screen will appear on the display. Use the **up** button cycle through digits. Use the **set** button to move between digits. Press the **ok** button to finish the setting procedure.

### • Setting the KgCO2 (Optional):

Press and hold the **up** button for 3 seconds. The kilo gram CO2 will appear on the display. Use the **up** button cycle through digits. Use the **set** button to move between digits. Press the **ok** button to finish the setting procedure.

### • Setting the Overload Power (Optional):

Press and hold the **energy** button for 3 seconds. The overload screen will appear on the display. Use the **set** button to select the digit to change. Use the **up** button cycle through digits. Press the **ok** button to finish the setting procedure. The default factory setting is 3120W.

## Clearing totals

To reset the total time: press SET+CLOCK together  
 To reset the total power(KWH): press SET+UP together  
 (this will also clear the Max./Min. Power recorded)  
 To reset the total cost: press SET+COST together  
 (Note the KWh and KgCO2 reading will take a few seconds to clear)

## Replacing the Batteries

Remove the battery cover by unscrewing the two securing screws. Remove the dead batteries and replace with the specified batteries, 2 x 1.5V AG13/LR44, ensuring correct polarity during insertion.

## Specifications

Rating: 200 to 276 Volts AC 50 Hz  
Load max: 13 Amps, 3120 Watts

### Time Display

Accumulated ON time 0 seconds to 9999 days  
The unit also displays the current time of day

### Energy Display

Measured voltage range: 200-276 Volts AC  $\pm 1.5\%$   
Measured current range: 0.005-13 Amps  $\pm 2\%$   
Measured power: 0.1 to 3120 Watts  $\pm 2\%$   
Power factor: 0.00 to 1.00  
Measured frequency range: 45-65Hz  
Overload threshold: Max. 3120 Watts

### Cost Display

Accumulated electricity usage: 0.00-9999 kilowatt-hour (kWh)  
Accumulated carbon footprint: 0.00 to 9999 KgCO<sub>2</sub>  
Selectable price/kWh: 00.00 to 99.99  
Accumulated cost/kWh: 0.00 to 999  
Selectable currency: in £ / \$ / €

Operating environment: 0°C to +50°C  
Storage environment: -10°C to +50°C  
Weight: 200g

## Regulatory Information

### WEEE

This product is classed as Electrical or Electronic equipment and comes under the WEEE waste disposal and recycling requirements of Directives 2002/96/EC and 2003/108/EC within the EU. Please ensure that you dispose of this product responsibly using your local authority's recycling facilities or via your supplier for commercial customers.

# User Guide for Appliance Power Meter



Model: ENER007

Energenie is a trading name of Sandal plc, Claremont House,  
Deans Court, Bicester, UK, OX26 6BW  
If you have questions, please visit us at  
[www.energenie4u.co.uk](http://www.energenie4u.co.uk)